

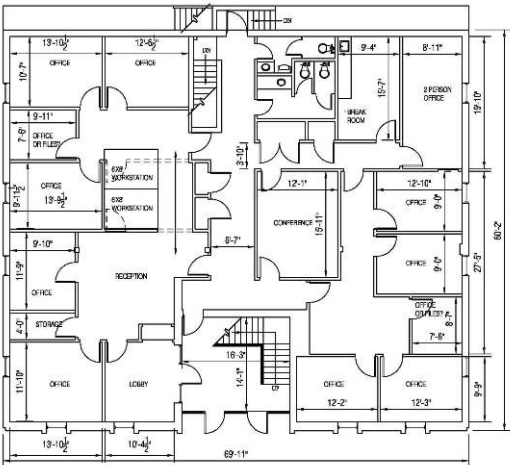
FOR LEASE

826 N. Elm Street

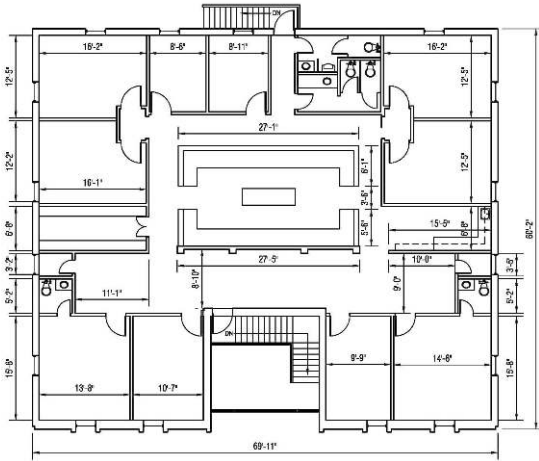
Office Space Available
800 +/- Square Feet



- Located in historic Fisher Park.
- Nicely appointed 1st floor office space.
- Free Parking.
- Close to downtown Greensboro as well as Wendover Avenue.
- Signage on Elm Street.



FIRST FLOOR



SECOND FLOOR

F. Cooper Brantley, Jr.

Ph 336.373.0028 x 316 ♦ Fx 336.373.0029
cbrantley@brantleyproperties.com
www.brantleyproperties.com

826 North Elm Street, Suite 200
Greensboro, North Carolina 27401

All information furnished regarding property for sale, rental, financing, or projections of income and expenses is from sources deemed reliable. No warranty or representation is made as to the accuracy thereof, and is submitted subject to errors, omissions, change of price, rental or other conditions, prior sale, financing, or withdrawal without notice.

